

PN-CT300F 压缩强度试验仪 Crush Tester

产品简介

PN-CT300F

RCT

ECT

PAT

FCT

CMT

CCT



参考标准

: GB/T 2679.8 ISO 12192 TAPPI T822

: GB/T 6546 ISO3037 TAPPI T811 T839

: GB/T 6548

: GB/T 22874 ISO 3035 TAPPI T825

CMT : GB/T 2679.6 ISO 7263-1 TAPPI T809

CCT : GB/T 40168 ISO16945 TAPPI T843

产品特点

1. 符合 WFI

PN-QMS

2.

3.

4.

5.

6.

7. N kgf lbf

8.



技术参数

1. (100 240) VAC 2A 50/60Hz

2. ± 1%

948 2 6

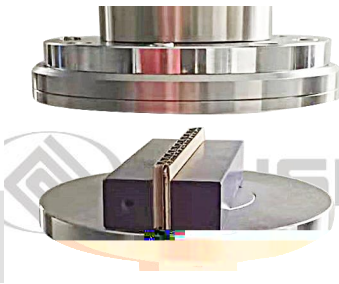
310022

www.pnshar.com

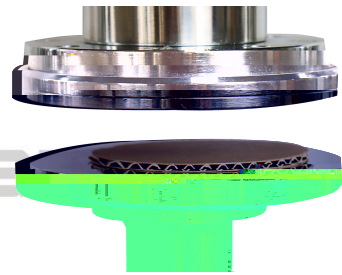
3. 1%
4. 0.1N
5. 5000N
6. 136mm
7. 0.034mm
8. 2 70 mm
9. 12.5± 2.5 mm/mi n 1 30mm/mi n
10. 30 mm/mi n
11. 7
- 12.
13. WFI RS232()/USB
14. 20± 10 85
15. (375× 345× 505) mm × ×
16. 38.6kg



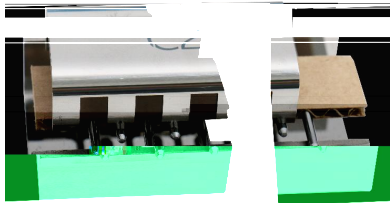
RCT



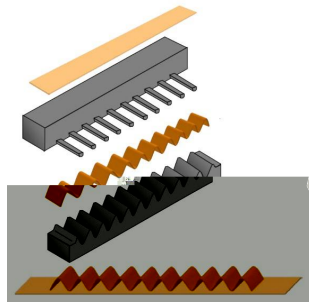
ECT



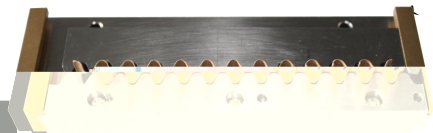
FCT



PAT



CMT



CCT